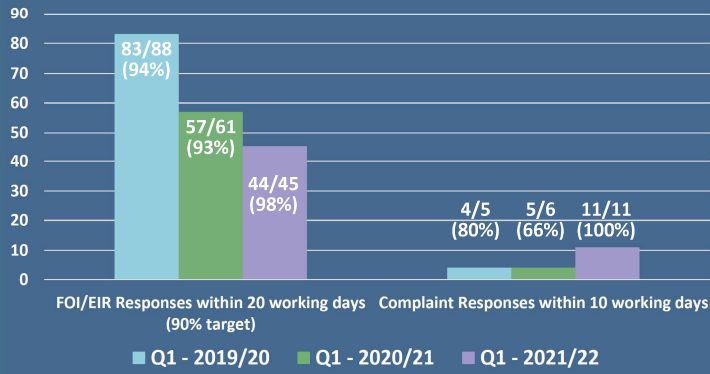
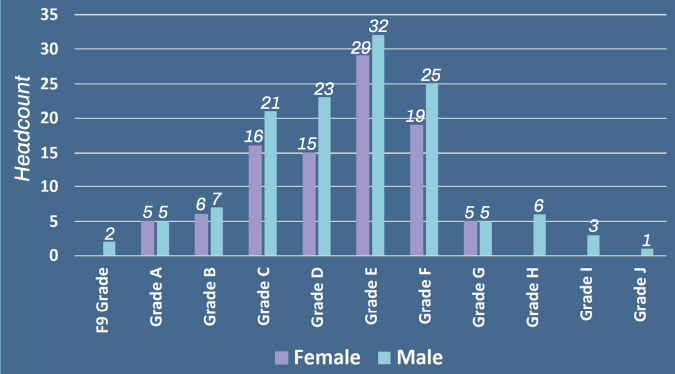


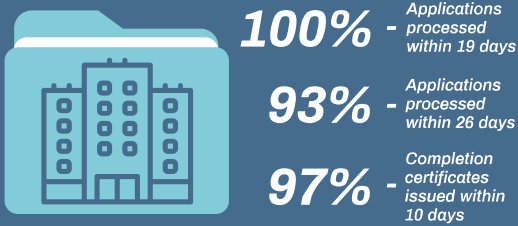
### # FOIs & Complaints



### Grade Breakdown



### Building Control performance



**100%** of engineering structures inspected in accordance with annual inspection programme

### Gender Profile

Female	Male
42.22%	57.78%

\*May 2021

**CON29** property searches returned within **5.9 days**



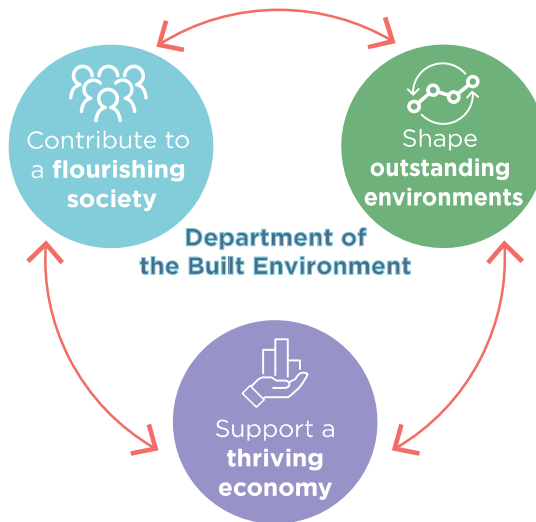
**4G/5G** shared infrastructure deployment expected **Q4 2022/23**



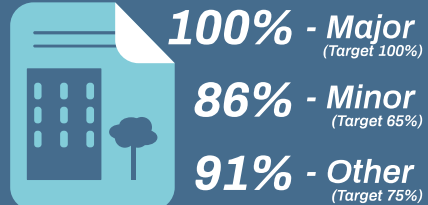
Freight Delivery & Servicing Feasibility Study has been commissioned



**Pedestrian Priority Programme** established, **Gateway 3/4** report to go to **S&W** in **October**



Planning applications determined within agreed timescales:



**100%** of **SuDS** consultations responded to within **21** working days



**729** cycle parking spaces secured through planning applications



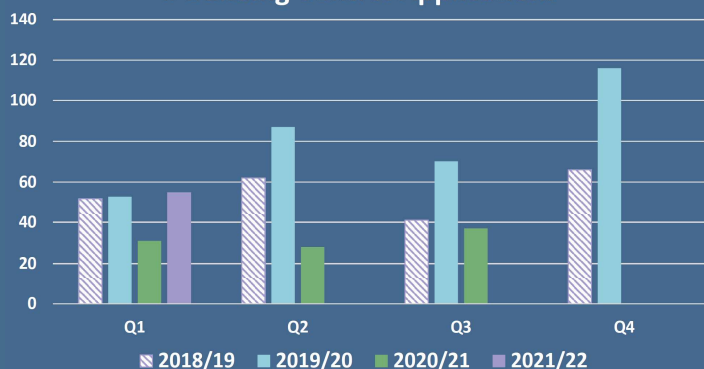
**97%** completion certificates issued within **10 days**



**129** scaffold/hoarding applications  
**734** scaffold/hoarding dispensations



### # Building Control Applications



### # Valid Planning Applications

